

Oncology Physician Training Initiative to Maximize Diversity

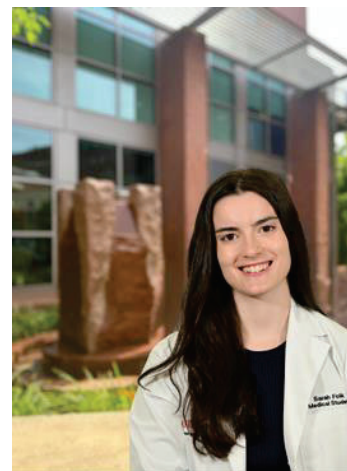
The OPTIM program offers first-year medical students hands-on mentored research, clinical shadowing in Medical Oncology, Radiation Oncology, and Surgical Oncology, and the opportunity to mentor high school and undergraduate students participating in the Rutgers Youth Enjoy Science (RUYES) program.

OPTIM Research Poster Symposium Presentations

Sarah Folk, BS
MD Candidate

Rutgers Robert Wood Johnson Medical School
*An Examination of the Microbiome's Role within Muscle
Invasive and Non-Muscle Invasive Bladder Cancer*

Mentor: Saum Ghodoussipour, MD



Shelby Hinchman, BS
MD Candidate

New Jersey Medical School

*A Qualitative Study Exploring the Emotional Impact and
Self Identity in Patients Being Treated for Hematological
Malignancies Separated by COST Score*

Mentor: Biren Saraiya, MD



Jocelynn Gonzalez, BS & Sadia Ibrahim, BA
MD Candidates

Rutgers Robert Wood Johnson Medical School
*Colorectal Patients Enrolled on Phase I
Studies at Rutgers Cancer Institute
by New Jersey County*

Mentor: Sanjay Goel, MD, MS



August 22, 2024
Rutgers Cancer Institute
195 Little Albany Street
New Brunswick, NJ
Auditoriums A & B

10:30 am	Welcome & Introduction: Sunita Chaudhary, Ph.D. Principal Investigator for Oncology Physician Training Initiative to Maximize Diversity (OPTIM) & Rutgers Youth Enjoy Science (RUYES)
10:35 am	OPTIM Podium Presentations
11 am	Poster Session 1 OPTIM & RUYES
11:50 am	RUYES Podium Presentation and Q&A
12:35 pm	Lunch
1:15 pm	Poster Session 2 RUYES
2:05 pm	Keynote: Robin Eubanks, Ph.D. <i>Welcome: Enter the Door Towards Cultural Competence and Cultural Humility</i>
3:10 pm	Closing Remarks: Sunita Chaudhary, Ph.D.



A Special Thanks to

Our Research Mentors:

Saum Ghodoussipour, MD

Director, Bladder and Urothelial
Cancer Program Rutgers Cancer
Institute of New Jersey, Assistant
Professor of Surgery,
Rutgers Robert Wood Johnson
Medical School

Sanjay Goel, MD, MS

Director of Phase I / Investigational
Therapeutics, Medical Oncologist
Professor of Medicine, Division of Medical
Oncology, and Section of Solid Tumor
Rutgers Robert Wood Johnson
Medical School

Biren Saraiya, MD

Associate Professor of Medicine,
Division of Medical Oncology and
Section of Solid Tumor
Rutgers Robert Wood Johnson
Medical School

The Departments of Oncology Physicians, Faculty & Staff

Sunita Chaudhary, PhD

Principal Investigator of
OPTIM & RUYES
Director of Research Education,
Rutgers Cancer Institute of New Jersey

Haejin In, MD, MPH, MBA, FACS, FSSO

Chief Diversity Officer, Associate Director for
Diversity, Equity and Inclusion,
Surgical Oncologist, Associate Professor of
Surgery, Robert Wood Johnson Medical School
Associate Professor of Health, Behavior and
Policy, Rutgers School of Public Health

OPTIM Staff:

Rosa Messina, Program Coordinator

Kristi Parker, Program Support

Julie Ann Glaz-Bopp, Grants Coordinator

