

CHEST[®]

Official publication of the American College of Chest Physicians



Risk of Catheter-Related Bloodstream Infection With Peripherally Inserted Central Venous Catheters Used in Hospitalized Patients

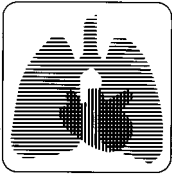
Nasia Safdar and Dennis G. Maki

Chest 2005;128;489-495
DOI 10.1378/chest.128.2.489

The online version of this article, along with updated information and services can be found online on the World Wide Web at:
<http://chestjournal.chestpubs.org/content/128/2/489.full.html>

Chest is the official journal of the American College of Chest Physicians. It has been published monthly since 1935. Copyright 2005 by the American College of Chest Physicians, 3300 Dundee Road, Northbrook, IL 60062. All rights reserved. No part of this article or PDF may be reproduced or distributed without the prior written permission of the copyright holder.
(<http://chestjournal.chestpubs.org/site/misc/reprints.xhtml>)
ISSN:0012-3692

A M E R I C A N C O L L E G E O F
 **C H E S T**
P H Y S I C I A N S[®]



Risk of Catheter-Related Bloodstream Infection With Peripherally Inserted Central Venous Catheters Used in Hospitalized Patients*

Nasia Safdar, MD, MS; and Dennis G. Maki, MD

Background: Peripherally inserted central venous catheters (PICCs) are now widely used for intermediate and long-term access in current-day health care, especially in the inpatient setting, where they are increasingly supplanting conventional central venous catheters (CVCs) placed percutaneously into the internal jugular, subclavian, or femoral veins. Data on the risk of PICC-related bloodstream infection (BSI) with PICCs used in hospitalized patients are limited.

Study objectives: To determine the risk of PICC-related BSI in hospitalized patients.

Study design: Prospective cohort study using data from two randomized trials assessing the efficacy of chlorhexidine-impregnated sponge dressing and chlorhexidine for cutaneous antiseptics.

Methods: PICCs inserted into the antecubital vein in two randomized trials during from 1998 to 2000 were prospectively studied; most patients were in an ICU. PICC-related BSI was confirmed in each case by demonstrating concordance between isolates colonizing the PICC at the time of removal and from blood cultures by restriction-fragment DNA subtyping.

Results: Overall, 115 patients had 251 PICCs placed. Mean duration of catheterization was 11.3 days (total, 2,832 PICC-days); 42% of the patients were in an ICU at some time, 62% had urinary catheters, and 49% had received mechanical ventilation. Six PICC-related BSIs were identified (2.4%), four with coagulase-negative staphylococcus, one with *Staphylococcus aureus*, and one with *Klebsiella pneumoniae*, a rate of 2.1 per 1,000 catheter-days.

Conclusion: This prospective study shows that PICCs used in high-risk hospitalized patients are associated with a rate of catheter-related BSI similar to conventional CVCs placed in the internal jugular or subclavian veins (2 to 5 per 1,000 catheter-days), much higher than with PICCs used exclusively in the outpatient setting (approximately 0.4 per 1,000 catheter-days), and higher than with cuffed and tunneled Hickman-like CVCs (approximately 1 per 1,000 catheter-days). A randomized trial of PICCs and conventional CVCs in hospitalized patients requiring central access is needed. Our data raise the question of whether the growing trend in many hospital hematology and oncology services to switch from use of cuffed and tunneled CVCs to PICCs is justified, particularly since PICCs are more vulnerable to thrombosis and dislodgment, and are less useful for drawing blood specimens. Moreover, PICCs are not advisable in patients with renal failure and impending need for dialysis, in whom preservation of upper-extremity veins is needed for fistula or graft implantation. (CHEST 2005; 128:489-495)

Key words: bacteremia; bloodstream infection; catheter-related bloodstream infection; cross-infection; intravascular catheters; nosocomial bacteremia; nosocomial infection; peripherally inserted central catheters

Abbreviations: BSI = bloodstream infection; CI = confidence interval; PFGE = pulsed-field gel electrophoresis; PICC = peripherally inserted central catheter; TPN = total parenteral nutrition

Safe and reliable vascular access is an essential element of modern-day health care. In recent years, the use of peripherally inserted central cath-

eters (PICCs) for intermediate and long-term venous access has steadily grown, initially for outpatient IV therapy, recently for hospitalized patients needing

prolonged central access. Data from Medtech Insight (Newport Beach, CA), a company that collects data on all types of medical products and devices, show sales of 942,000 PICCs in US health centers. Reported rates of PICC-related bloodstream infection (BSI) have ranged from 0.4 to 0.8 per 1,000 catheter-days¹⁻⁶. However, most of the previously reported studies were retrospective, and nearly all were conducted in the outpatient setting. Thus, the risk of PICC-related BSI in hospitalized patients is unclear. We report a prospective study undertaken to determine the risk of PICC-related BSI in a university hospital with PICCs used exclusively in hospitalized patients and perform a systematic review to estimate rates of PICC-related BSI in hospitalized patients.

MATERIALS AND METHODS

Patients participating in two randomized trials during from 1998 to 2000, one study⁷ evaluating the efficacy of a novel chlorhexidine-gluconate impregnated sponge dressing, and the other study⁸ evaluating 1% tincture of chlorhexidine for prevention of catheter-related infection, formed the study population. Data were collected prospectively on study patients with newly inserted PICCs, including demographic features, underlying diseases, severity of illness according to APACHE (acute physiology and chronic health evaluation) II score,⁹ reason for placement of the catheter, service, antibiotic use, length of hospital stay, number of days each catheter was in place, presence of other invasive devices (urinary catheters and endotracheal tubes), and all clinical and laboratory data pertaining to infection.

Microbiological Methods

At catheter removal, skin of the insertion site was cultured quantitatively as previously described.¹⁰ For each catheter, two 5-cm segments, a proximal intracutaneous segment, and the tip (both transported in a sterile container) were cultured semiquantitatively, and each hub and fluid from the most distal injection port of each lumen were cultured quantitatively, as previously described.¹⁰

Microorganisms were identified according to standard criteria.¹¹ When catheter-associated BSI occurred, isolates recovered from the insertion site, catheter segments, infusate, or hubs, and blood cultures that appeared similar phenotypically were subtyped by pulsed-field gel electrophoresis (PFGE) after digestion

*From the Section of Infectious Diseases, Department of Medicine, University of Wisconsin Medical School, Madison, WI.

Presented in part at the 41st Interscience Conference on Antimicrobial Agents and Chemotherapy, Chicago, IL, December 16-19, 2001.

Supported by an unrestricted gift for research from the Oscar Rennebohm Foundation of Madison, WI.

Manuscript received May 19, 2004; revision accepted January 21, 2005.

Reproduction of this article is prohibited without written permission from the American College of Chest Physicians (www.chestjournal.org/misc/reprints.shtml).

Correspondence to: Dennis G. Maki, MD, H5/574, University of Wisconsin Hospital and Clinics, Madison, WI 53792; e-mail: dgmaki@medicine.wisc.edu.

of genomic DNA with restriction endonucleases,¹² using a computerized system for determining the relatedness of isolates (Gel Doc 2000; Bio Rad Laboratories; Hercules, CA).

Definitions

Catheter-tip colonization was defined as a positive semiquantitative culture finding of an intravascular catheter segment (> 15 cfu) and is considered synonymous with local infection of the catheter.¹⁰ *Catheter-related BSI* was defined as isolation of the same strain from the catheter segment, a hub, or infusate, and from one or more blood cultures, as proven by restriction-fragment subtyping with no other identifiable source for the BSI.¹⁰

Systematic Review of the Literature

We performed a computerized search of PUBMED (including MEDLINE) using the following key words: "peripherally inserted central catheter," "PICC," "infection," "prospective," and "risk," and combinations of these search terms. Reference lists of articles were searched to identify additional articles. Studies were included if all or most of the study population was hospitalized, catheter-related BSI was defined explicitly, and sufficient data were provided to calculate rates of infection. We restricted our search to PICCs in inpatients since the focus of this article was to determine rates of PICC-related BSI in hospitalized patients.

Statistical Analysis

The cumulative incidence of PICC-related BSI was calculated separately for adults and neonatal populations, by combining the results of several studies using standard formulas for combining proportions in which the weighted average and variance are

Table 1—Features of the Study Population*

Features	Data
Patients, No.	115
Age, yr	62 ± 19
Gender, %	
Male	55
Female	45
Host risk factors, %	
Surgery	10
Insulin-dependent diabetes mellitus	23
Malignancy	20
Transplant	20
Open wound	17
Therapeutic risk factors, %	
Urinary catheters	62
Mechanical ventilation	49
Prior antibiotics	71
Mean laboratory values	
Albumin, g/L	23
Hematocrit, g/L	300
APACHE II score, mean ± SD	12.6 ± 7.0
Duration of catheterization, d, mean ± SD	11.3 ± 19.8
Reason for removal, %	
No longer needed	41
Patient died	12
Suspected catheter-related BSI	7
Not stated	40

*Data are presented as mean ± SD or %.

Table 2—Microbiology of PICC-Related BSI

Pathogens	No.
Coagulase-negative staphylococci	4
<i>S aureus</i>	1
<i>K pneumoniae</i>	1

calculated.¹³ All statistical analyses were performed using Statacorp 2003 (Stata Statistical Software; College Station, TX).

RESULTS

A total of 251 PICCs inserted in 115 patients were studied prospectively over a mean duration of catheterization of 11.3 days (total, 2,832 PICC-days). Most catheters were used in patients highly vulnerable to nosocomial infection, as shown by high APACHE II scores (mean score, 12.6), multiple invasive medical devices, and hypoalbuminemia (Table 1); 42% of the study patients were in an ICU for some time in their hospital stay.

Fifty-two PICCs (20.7%) were colonized at removal. Six PICC-related BSIs (2.4%) were confirmed, all showing concordance between cultures obtained from an infected PICC and blood cultures (Table 2). A representative PFGE is shown in Figure 1. BSIs were caused by coagulase-negative staphylococci,⁴ *Staphylococcus aureus*,¹ and *Klebsiella pneumoniae*,¹ at a rate of 2.1 per 1,000 catheter-days.

Recognizing that the database is comprised of patients who were participating in two randomized trials of novel strategies for prevention of CVC-related BSI, and both strategies were found to reduce the incidence of catheter colonization and CVC-related BSI,^{7,8} the rate of PICC-related BSI was calculated for the pooled control groups of both trials (150 PICCs, 1,673 PICC-days). All six PICC-related BSIs occurred in control PICCs,

which had a rate of PICC-related BSI of 3.5 per 1,000 PICC-days (3.9%); 40 PICCs were colonized (26.6%).

Results of Literature Review

Our literature review identified 33 studies that have addressed the risk of PICC-related BSI in hospitalized patients; 19 were performed in neonates and 14 in adults. These studies are summarized in Table 3.^{14–46} The cumulative incidence of PICC-related BSI was 2.1 per 1,000 PICC-days (95% confidence interval [CI], 1.7 to 2.5) overall. In adults and children, the rate was 1.9 per 1,000 PICC-days (95% CI, 1.4 to 2.6); in neonates, the rate was 2.20 per 1,000 PICC-days (95% CI, 1.7 to 2.3). The risk of PICC-related BSI per 100 PICCs was 3.2 (95% CI, 1.9 to 4.5) overall, 2.5 (95% CI, 0.5 to 4.5) in adults and children, and 3.8 (95% CI, 1.9 to 5.6) in neonates, including very low birth weight neonates. Five of the studies included only adult ICU patients. Eleven studies were retrospective, and 22 were prospective. The rate of PICC-related BSI when the analyses were restricted to prospective studies was 1.3 (95% CI, 1.0 to 1.7) per 1,000 days and 2.5 (95% CI, 0.9 to 3.4) per 100 PICCs.

Discussion and Literature Review

Numerous prior reports^{1–6} of clinical experience with PICC lines have suggested that PICCs pose a much lower risk of catheter-related BSI than conventional nontunneled, noncuffed CVCs placed percutaneously in the internal jugular or subclavian veins, perhaps because of less dense bacterial colonization on the midarm as compared to the sites used for conventional CVCs, the neck, upper chest, or groin.⁴⁷ However, the vast majority of the prior published studies^{1–6} of PICC-related BSI were retrospective, and PICCs were used exclusively or primarily in the outpatient setting. Thus, whether

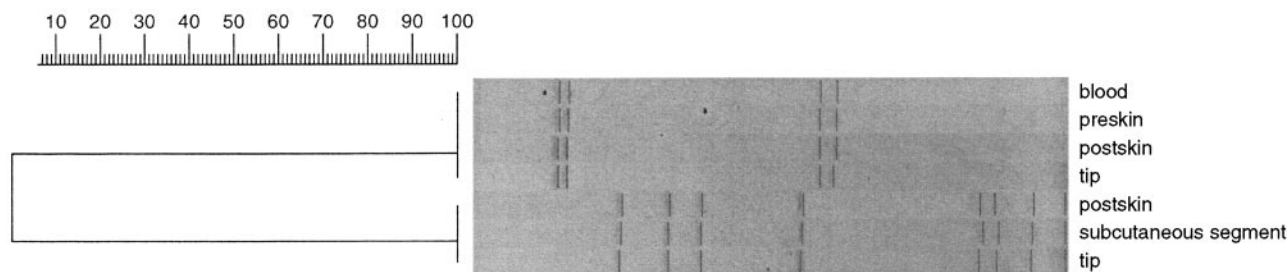


FIGURE 1. PFGE of isolates of coagulase-negative staphylococci recovered from cultures of a PICC that caused PICC-related BSI. Coagulase-negative staphylococcus were recovered from multiple sites; one recovered from the skin of the insertion site at catheter removal and from the catheter tip shows 100% restriction fragment polymorphism identity with the strain recovered from blood cultures. Presumed epidemiology: skin, catheter, blood, extraluminally.

Table 3—Studies of PICC-Related BSI in Hospitalized Patients*

Source	Type of Study	PICCs, No.	BSIs, No.	PICC-Days, No.	Hospital Population	PICC-Related BSI	
						Per 100 PICCs	Per 1,000 PICC-Days
Sketch et al ¹⁴	Prospective	70	0	7,280	Coronary care unit	0	0
Abi-Nader ¹⁵	Prospective	92	1	878	Adults in an ICU	1.1	1.1
Lam et al ¹⁶	Retrospective	135	3	1,890	Adults	2.2	1.6
Chait et al ¹⁷	Retrospective	137	5	1,245	Children	3.6	2.1
Alhimyary et al ¹⁸	Retrospective	135	0	1,381	Adults receiving TPN	0.0	0.0
Ng et al ¹⁹	Prospective	89	1	635	Adults in an ICU	1.1	1.6
Yeung et al ²⁰	Prospective	111	12	1,869	Children receiving TPN	10.8	6.4
Cowl et al ²¹	RCT	51	2	490	Adults	3.9	4.0
Griffiths and Philpot ²²	Prospective	29	2	435	Adults in an ICU	6.8	4.5
Chlebicki and Teo ²³	Retrospective	94	3	1,598	Adults	3.2	1.9
Giuffrida et al ²⁴	Prospective	472	0	2,360	Adults in an ICU	0	0
Harter et al ²⁵	Prospective	65	1	455	Adults with hematologic malignancy	1.5	2.2
Funk et al ²⁶	Prospective	167	4	789	Adults receiving general medical service	2.4	1.2
Ogura et al ²⁷	Retrospective	52	9	1,375	Pregnant women	17.3	6.5
Kamala et al ²⁸	Prospective	31	1	288	Neonates receiving TPN	3.2	3.5
Chathas et al ²⁹	Retrospective	481	6	6,206	Neonate	1.2	1.0
Reynolds ³⁰	Retrospective	17	1	165	Neonate	5.8	6.0
Dolcourt and Bose ³¹	Prospective	18	0	446	Neonate	0	0
Foo et al ³²	Retrospective	68	13	775	Very low birth weight neonates	19.1	16.7
Durand et al ³³	Prospective	53	4	1,325	Neonate	7.5	3.0
Golombek et al ³⁴	Prospective	57	4	792	Neonate	7.1	5.1
Harms et al ³⁵	Prospective	148	2	2,220	Neonate	1.35	0.9
Klein and Rudd ³⁶	Prospective	34	4	1,088	Neonate	11.7	3.6
Leick-rude ³⁷	Prospective	283	0	1,162	Neonate	0	0
Loeff et al ³⁸	Retrospective	58	4	1,298	Neonate	6.9	3.0
Nakamura et al ³⁹	Prospective	40	0	440	Neonate	0	0
Rudin and Nars ⁴⁰	Prospective	283	0	1,983	Neonate	0	0
Sherman et al ⁴¹	Prospective	55	1	1,199	Neonate	1.8	0.8
Shulman et al ⁴²	Prospective	29	2	704	Neonate	6.8	2.8
Maki et al ⁴³	RCT	43	8	860	Neonate	18.6	0.9
Cairns et al ⁴⁴	Retrospective	61	19	915	Very low birth weight neonates	31.1	2.0
Aggarwal and Downe ⁴⁵	Retrospective	44	3	256	Neonates	6.8	11.7
Neubauer ⁴⁶	Prospective	535	4	12,305	Neonate	0.7	0.3
Pooled rate							
All studies						3.2 (1.9–4.5)	2.1 (1.7–2.5)
Prospective studies						2.1 (0.9–3.4)	1.3 (1.0–1.7)
Adults and older children						2.5 (0.5–4.5)	1.9 (1.4–2.6)
Neonates						3.8 (1.9–5.6)	2.2 (1.7–2.3)

*Data in parentheses indicate 95% confidence intervals. RCT = randomized clinical trials.

PICCs are safer than conventional CVCs in hospitalized patients has been unclear.

In our rigorous prospective study of PICCs used solely in the inpatient setting in a high-risk patient population, we found a rate of PICC-related BSI (overall, 2.4%; 2.1 per 1,000 PICC-days; in control catheters in the database, 3.9%; 3.5 per 1,000 PICC-days) to be considerably higher than a pooled rate based on numerous retrospective reports of PICCs used in outpatients (0.4 per 1,000

days), but comparable to rates of BSI found in prospective studies of conventional CVCs placed percutaneously in the internal jugular, subclavian, or femoral veins in inpatients (approximately 2.3 per 1,000 days).⁶

We found overall pooled rates of PICC-related BSI of 2.1 per 1,000 PICC-days in our literature review encompassing ICU settings, general inpatient settings, and neonatal ICUs. This is comparable to the rates reported in our current study.

Other studies^{14,15,19,22,24} of PICC used exclusively in the adult ICU setting have found rates of PICC-related BSI ranging from 0 to 4.5 per 100 catheter-days. The discrepant results can be explained in part by different patient populations, including differences in severity of illness, the duration of catheter implantation, and extent of catheter manipulation in these studies.

In the general adult inpatient setting, rates of PICC-related BSI reported in the literature have ranged from 0 to 6.5 per 1,000 PICC-days (Table 3). In a retrospective analysis of 135 PICCS inserted in inpatients by Lam et al,¹⁶ most of the patients were hospitalized in a general medical or surgical service; unfortunately, few PICCS were cultured at removal. The rate of reported PICC-related BSI was 2.3% (1.6 per 1,000 catheter-days). Chait et al¹⁷ reported a rate of PICC-related BSI of 2.1 per 1,000 catheter-days in a retrospective study of PICCs used in children; however, PICCs were removed only if bacteremia failed to respond to antimicrobial therapy. Another retrospective study²¹ in adult inpatients had no PICC-related infections; however, the catheters were used exclusively for total parenteral nutrition (TPN) and were not routinely cultured.

In a prospective study of 111 PICCs used for TPN in hospitalized children, Yeung et al²⁰ reported a rate of BSI of 6.4 per 1,000 catheter-days; however, again, catheters were not cultured. In a study of 51 PICCs in adult inpatients in which every PICC with suspected infection was cultured, Cowl et al²¹ found a rate of 4.9 BSIs per 1,000 catheter-days; granulocytopenic patients and organ transplant recipients were excluded from this study. A high incidence of PICC-related BSI was reported in a small retrospective study²⁷ of pregnant women (6.5 per 1,000 PICC-days); univariate analysis found preterm labor to be associated with PICC-related BSI. Harter et al²⁵ performed a prospective study to determine the rate of PICC-related BSI in adult patients with hematologic malignancy, and found a rate of 2.2 per 1,000 catheter-days.

Two randomized controlled trials, one comparing conventional CVCs to PICCs in adults²¹ and the other comparing PICCs to peripheral IV catheters in neonates,⁴⁸ have been reported. Janes et al⁴⁸ reported a 34% rate of PICC-associated sepsis in their randomized trial of PICCs vs peripheral IV catheters in 63 very low birth weight neonates; however, catheters were not routinely cultured at removal. Moreover, rates of catheter-related BSI were not reported, and we did not include the data from this study in our calculation of rates of PICC-related BSI.

Low birth weight and very low birth weight neonates in neonatal ICUs are a population at exceedingly high risk of catheter-related BSI, as our summary of the literature suggests, with a rate of PICC-related BSI of 2.20 per 1,000 catheter-days. Life-threatening complications beyond infection, such as cardiac tamponade, pleural effusion, and ventricular tachycardia, have also been well described in the neonatal population.

In many of the studies included in our literature review, catheters were not routinely cultured at removal. Moreover, molecular subtyping to corroborate the origin of every PICC-associated BSI was not performed in any of these studies. However, the definitions used for PICC-related infection were generally commensurate with those recommended by the Centers for Disease Control and Prevention for diagnosis of vascular catheter-related BSI.⁴⁹ The risk of PICC-related BSI in hospitalized patients in our center is similar to the results of Cowl et al,²¹ which we feel reflects the prospective nature of our study in which every PICC was cultured at removal, including the implanted catheter, hubs, and infusate, and DNA subtyping was employed in every case when the patient had positive blood cultures and possible PICC-related BSI.

Our data and the previous studies suggest that PICCs used for intermediate access in inpatients are associated with a risk of catheter-related BSI higher than that reported with cuffed and tunneled Hickman-like CVCs (approximately one per 1,000 catheter-days),⁶ and raise the question whether the growing trend in many hospital hematology and oncology services to switch from the use of cuffed and tunneled CVCs to PICCs is justified, particularly since PICCs are more vulnerable to thrombosis and dislodgment⁵⁰⁻⁵³ and are less useful for drawing blood specimens. Moreover, because of a high incidence of thrombosis, PICCs are not advisable in patients with renal failure who may require hemodialysis in the future, since preservation of upper-extremity veins is essential for later fistulas or grafts.⁵⁴

Our rate of PICC-related BSI (2.1 to 3.5 per 1,000 catheter-days) is quite similar to that reported with prospectively studied, short-term, noncuffed CVCs placed percutaneously in the internal jugular or subclavian veins (2.3 per 1,000 CVC-days).⁶ As such, the assumption that PICCs are safer than conventional CVCs with regard to the risk of infection is in question and should be assessed by a larger, adequately powered randomized trial that assesses peripheral vein thrombophlebitis, PICC-related thrombosis, and premature dislodgment, as well as catheter-related BSI.

REFERENCES

- 1 Bottino J, McCredie KB, Groschel DH, et al. Long-term intravenous therapy with peripherally inserted silicone elastomer central venous catheters in patients with malignant diseases. *Cancer* 1979; 43:1937-1943
- 2 Graham DR, Keldermans MM, Klemm LW, et al. Infectious complications among patients receiving home intravenous therapy with peripheral, central, or peripherally placed central venous catheters. *Am J Med* 1991; 91:95S-100S
- 3 Merrell SW, Peatross BG, Grossman MD, et al. Peripherally inserted central venous catheters: low-risk alternatives for ongoing venous access. *West J Med* 1994; 160:25-30
- 4 Thiagarajan RR, Ramamoorthy C, Gettmann T, et al. Survey of the use of peripherally inserted central venous catheters in children. *Pediatrics* 1997; 99:E4
- 5 Skiest DJ, Abbott M, Keiser P. Peripherally inserted central catheters in patients with AIDS are associated with a low infection rate. *Clin Infect Dis* 2000; 30:949-952
- 6 Kluger D, Maki D. The relative risk of intravascular device-related bloodstream infections with different types of intravascular devices in adults: a meta-analysis of 206 published studies. Presented at the Fourth Decennial International Conference on Nosocomial and Healthcare-Associated Infections, March 5-9, 2000; Atlanta, GA
- 7 Maki DG, Narans L, Knasinski V, et al. Prospective randomised, investigator-masked trial of a novel chlorhexidine-impregnated disk (Biopatch) on central venous and arterial catheters. Presented at the Fourth International Decennial Conference on Nosocomial and Healthcare-Associated Infections, 2000; Atlanta, GA
- 8 Maki DG, Knasinski V, Narans L, et al. A randomized trial of a novel 1% chlorhexidine-75% alcohol tincture versus 10% povidone-iodine for cutaneous disinfection with vascular catheters. Presented at the Annual Society for Healthcare Epidemiology of America Meeting, April 1-3, 2001; Toronto, Canada
- 9 Knaus WA, Draper EA, Wagner DP, et al. APACHE II: a severity of disease classification system. *Crit Care Med* 1985; 13:818-829
- 10 Maki DG, Stolz SM, Wheeler S, et al. Prevention of central venous catheter-related bloodstream infection by use of an antiseptic-impregnated catheter: a randomized, controlled trial. *Ann Intern Med* 1997; 127:257-266
- 11 Balows LE, Hausler W, Shadomy H. *Manual of clinical microbiology*. 5th ed. Washington, DC: American Society for Microbiology, 1991
- 12 Alvarado CJ, Stolz SM, Maki DG. Nosocomial infection from contaminated endoscopes: a flawed automated endoscope washer; an investigation using molecular epidemiology. *Am J Med* 1991; 91(Suppl):S725-S805
- 13 Laird NM, Mosteller F. Some statistical methods for combining experimental results. *Int J Technol Assess Health Care* 1990; 6:5-30
- 14 Sketch MH, Cale M, Mohiuddin SM, et al. Use of percutaneously inserted venous catheters in coronary care units. *Chest* 1972; 62:684-689
- 15 Abi-Nader JA. Peripherally inserted central venous catheters in critical care patients. *Heart Lung* 1993; 22:428-434
- 16 Lam S, Scannell R, Roessler D, et al. Peripherally inserted central catheters in an acute-care hospital. *Arch Intern Med* 1994; 154:1833-1837
- 17 Chait PG, Ingram J, Phillips-Gordon C, et al. Peripherally inserted central catheters in children. *Radiology* 1995; 197:775-778
- 18 Alhimyary A, Fernandez C, Picard M, et al. Safety and efficacy of total parenteral nutrition delivered via a peripherally inserted central venous catheter. *Nutr Clin Pract* 1996; 11:199-203
- 19 Ng PK, Ault MJ, Maldonado LS. Peripherally inserted central catheters in the intensive care unit. *J Intensive Care Med* 1996; 11:49-54
- 20 Yeung CY, Lee HC, Huang FY, et al. Sepsis during total parenteral nutrition: exploration of risk factors and determination of the effectiveness of peripherally inserted central venous catheters. *Pediatr Infect Dis J* 1998; 17:135-142
- 21 Cowl CT, Weinstock JV, Al-Jurf A, et al. Complications and cost associated with parenteral nutrition delivered to hospitalized patients through either subclavian or peripherally-inserted central catheters. *Clin Nutr* 2000; 19:237-243
- 22 Griffiths VR, Philpot P. Peripherally inserted central catheters (PICCs): do they have a role in the care of the critically ill patient? *Intensive Crit Care Nurs* 2002; 18:37-47
- 23 Chlebicki MP, Teo EK. Review of peripherally inserted central catheters in the Singapore acute-care hospital. *Singapore Med J* 2003; 44:531-535
- 24 Giuffrida DJ, Bryan-Brown CW, Lumb PD, et al. Central vs peripheral venous catheters in critically ill patients. *Chest* 1986; 90:806-809
- 25 Harter C, Ostendorf T, Bach A, et al. Peripherally inserted central venous catheters for autologous blood progenitor cell transplantation in patients with haematological malignancies. *Support Care Cancer* 2003; 11:790-794
- 26 Funk D, Gray J, Plourde PJ. Two-year trends of peripherally inserted central catheter-line complications at a tertiary-care hospital: role of nursing expertise. *Infect Control Hosp Epidemiol* 2001; 22:377-379
- 27 Ogura JM, Francois KE, Perlow JH, et al. Complications associated with peripherally inserted central catheter use during pregnancy. *Am J Obstet Gynecol* 2003; 188:1223-1225
- 28 Kamala F, Boo NY, Cheah FC, et al. Randomized controlled trial of heparin for prevention of blockage of peripherally inserted central catheters in neonates. *Acta Paediatr* 2002; 91:1350-1356
- 29 Chathas MK, Paton JB, Fisher DE. Percutaneous central venous catheterization: three years' experience in a neonatal intensive care unit. *Am J Dis Child* 1990; 144:1246-1250
- 30 Reynolds J. Comparison of percutaneous venous catheters and Teflon catheters for intravenous therapy in neonates. *Neonatal Netw* 1993; 12:33-39
- 31 Dolcourt JL, Bose CL. Percutaneous insertion of silastic central venous catheters in newborn infants. *Pediatrics* 1982; 70:484-486
- 32 Foo R, Fujii A, Harris JA, et al. Complications in tunneled CVL versus PICC lines in very low birth weight infants. *J Perinatol* 2001; 21:525-530
- 33 Durand M, Ramanathan R, Martinelli B, et al. Prospective evaluation of percutaneous central venous silastic catheters in newborn infants with birth weights of 510 to 3,920 grams. *Pediatrics* 1986; 78:245-250
- 34 Golombek SG, Rohan AJ, Parvez B, et al. "Proactive" management of percutaneously inserted central catheters results in decreased incidence of infection in the ELBW population. *J Perinatol* 2002; 22:209-213
- 35 Harms K, Herting E, Kron M, et al. Randomized, controlled trial of amoxicillin prophylaxis for prevention of catheter-related infections in newborn infants with central venous silicone elastomer catheters. *J Pediatr* 1995; 127:615-619
- 36 Klein MD, Rudd M. Successful central venous catheter placement from peripheral subcutaneous veins in children. *Anesthesiology* 1980; 52:447-448
- 37 Leick-Rude MK. Use of percutaneous silastic intravascular catheters in high-risk neonates. *Neonatal Netw* 1990; 9:17-25
- 38 Loeff DS, Matlak ME, Black RE, et al. Insertion of a small

- central venous catheter in neonates and young infants. *J Pediatr Surg* 1982; 17:944–949
- 39 Nakamura KT, Sato Y, Erenberg A. Evaluation of a percutaneously placed 27-gauge central venous catheter in neonates weighing less than 1200 grams. *JPEN J Parenter Enteral Nutr* 1990; 14:295–299
 - 40 Rudin C, Nars PW. A comparative study of two different percutaneous venous catheters in newborn infants. *Eur J Pediatr* 1990; 150:119–124
 - 41 Sherman MP, Vitale DE, McLaughlin GW, et al. Percutaneous and surgical placement of fine silicone elastomer central catheters in high-risk newborns. *JPEN J Parenter Enteral Nutr* 1983; 7:75–78
 - 42 Shulman RJ, Pokorny WJ, Martin CG, et al. Comparison of percutaneous and surgical placement of central venous catheters in neonates. *J Pediatr Surg* 1986; 21:348–350
 - 43 Maki DG, Garland J, Alex C, et al. A randomized trial of a vancomycin-heparin lock solution for prevention of PICC-related bloodstream infections in a NICU. Abstract K-666. Presented at the 42nd Interscience Conference on Antimicrobial Agents and Chemotherapy, September 27–30, 2002; San Diego, CA
 - 44 Cairns PA, Wilson DC, McClure BG, et al. Percutaneous central venous catheter use in the very low birth weight neonate. *Eur J Pediatr* 1995; 154:145–147
 - 45 Aggarwal R, Downe L. Use of percutaneous silastic central venous catheters in the management of newborn infants. *Indian Pediatr* 2001; 38:889–892
 - 46 Neubauer AP. Percutaneous central iv access in the neonate: experience with 535 silastic catheters. *Acta Paediatr* 1995; 84:756–760
 - 47 Maki DG. Marked differences in skin colonization of insertion sites for central venous, arterial, and peripheral IV catheters: the major reason for differing risks of catheter-related infection? Presented at the Third International Conference on Nosocomial Infections, July 31–August 3, 1990; Atlanta, GA
 - 48 Janes M, Kalyn A, Pinelli J, et al. A randomized trial comparing peripherally inserted central venous catheters and peripheral intravenous catheters in infants with very low birth weight. *J Pediatr Surg* 2000; 35:1040–1044
 - 49 O'Grady NP, Alexander M, Dellinger EP, et al. Guidelines for the prevention of intravascular catheter-related infections. *Infect Control Hosp Epidemiol* 2002; 23:759–769
 - 50 Allen AW, Megargell JL, Brown DB, et al. Venous thrombosis associated with the placement of peripherally inserted central catheters. *J Vasc Interv Radiol* 2000; 11:1309–1314
 - 51 Grove JR, Pevec WC. Venous thrombosis related to peripherally inserted central catheters. *J Vasc Interv Radiol* 2000; 11:837–840
 - 52 Duerksen DR, Papineau N, Siemens J, et al. Peripherally inserted central catheters for parenteral nutrition: a comparison with centrally inserted catheters. *JPEN J Parenter Enteral Nutr* 1999; 23:85–89
 - 53 Andes DR, Urban AW, Acher CW, et al. Septic thrombosis of the basilic, axillary, and subclavian veins caused by a peripherally inserted central venous catheter. *Am J Med* 1998; 105:446–450
 - 54 Ryder MA. Peripherally inserted central venous catheters. *Nurs Clin North Am* 1993; 28:937–971

Risk of Catheter-Related Bloodstream Infection With Peripherally Inserted Central Venous Catheters Used in Hospitalized Patients*

Nasia Safdar and Dennis G. Maki

Chest 2005;128; 489-495

DOI 10.1378/chest.128.2.489

This information is current as of April 4, 2011

Updated Information & Services

Updated Information and services can be found at:

<http://chestjournal.chestpubs.org/content/128/2/489.full.html>

References

This article cites 47 articles, 12 of which can be accessed free at:

<http://chestjournal.chestpubs.org/content/128/2/489.full.html#ref-list-1>

Cited By

This article has been cited by 13 HighWire-hosted articles:

<http://chestjournal.chestpubs.org/content/128/2/489.full.html#related-urls>

Permissions & Licensing

Information about reproducing this article in parts (figures, tables) or in its entirety can be found online at:

<http://www.chestpubs.org/site/misc/reprints.xhtml>

Reprints

Information about ordering reprints can be found online:

<http://www.chestpubs.org/site/misc/reprints.xhtml>

Citation Alerts

Receive free e-mail alerts when new articles cite this article. To sign up, select the "Services" link to the right of the online article.

Images in PowerPoint format

Figures that appear in *CHEST* articles can be downloaded for teaching purposes in PowerPoint slide format. See any online figure for directions.

A M E R I C A N C O L L E G E O F



P H Y S I C I A N S[®]