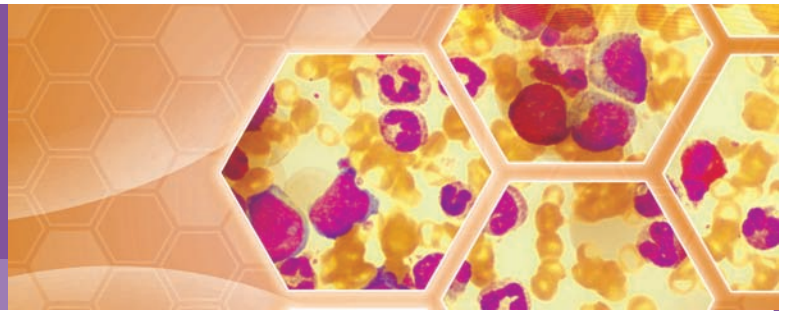




COMMUNITY HEMATOLOGY/ ONCOLOGY CLINICAL DEBATES: CHRONIC MYELOGENOUS LEUKEMIA

A LIVE CME/CE-ACCREDITED ACTIVITY



TARGET AUDIENCE

This activity has been designed to meet the educational needs of community-based hematologists, fellows, nurse practitioners, physician assistants, and nurses who treat patients with chronic myelogenous leukemia (CML).

PURPOSE

To educate oncology health professionals on the new treatment approaches, current clinical debates, and resolutions for CML.

ACTIVITY OVERVIEW

CML is among the most rapidly evolving fields in hematology. This is primarily attributed to progress in understanding of the biology of CML and treatment responses. As a result of data from ongoing trials, consensus-based treatment will likely evolve and changes in guidelines are expected.

This regional activity aims to provide community-based medical hematology/oncology professionals an understanding of the rationale behind new treatment approaches. The activity also aims to provide clarity regarding current clinical debates and their optimal resolution. The resolution of such debates will greatly influence CML treatment in 2010 and beyond. Expert faculty will be comprised of National Comprehensive Cancer Network CML panel members and CML researchers, who will provide an overview of clinical debates, followed by selected case studies to stimulate interdisciplinary discussion.

LEARNING OBJECTIVES

Upon completion of this educational activity, participants should be better able to:

- Analyze evidence-based treatment strategies for newly diagnosed and imatinib-resistant CML based on clinical characteristics of disease
- Outline an algorithm for appropriate disease monitoring, including the relevance of an early therapeutic response
- Identify the mechanisms of acquired resistance mutations in CML to better monitor patients for disease progression and determine alternative therapy
- Explain to patients the availability of clinical trial participation when warranted

ACTIVITY AGENDA

60 MINUTES WITH ONE FACULTY EXPERT

- Activity Overview (5 mins)
- Interactive Case Study Presentations* (55 mins)
 - How is CML diagnosed?
 - What is the correlation between fluorescent in situ hybridization and cytogenetics?
 - What is the optimal dose of front-line imatinib?
 - Should second-generation tyrosine kinase inhibitors be used as front-line treatment?
 - When should patients undergo stem cell transplantation?
 - What is the optimal disease monitoring strategy?
 - How is response defined?
 - What is the optimal drug duration in patients who have achieved and maintain a complete molecular response?
 - What are the implications of specific mutations on the choice of therapy?
 - Should you switch from imatinib to a second-generation tyrosine kinase inhibitor based on a rising polymerase chain reaction value?

*Includes a 10-minute interactive discussion following the case presentations.

CHAIRPERSONS

Moshe Talpaz, MD

University of Michigan Comprehensive Cancer Center

Dale L. Bixby, MD, PhD

University of Michigan Comprehensive Cancer Center

PRESENTER

Gail J. Roboz, MD

Weill Medical College of Cornell University

DISCLOSURE OF CONFLICTS OF INTEREST

University of Michigan Medical School requires instructors, planners, managers, and other individuals who are in a position to control the content of this activity to disclose any real or apparent conflict of interest they may have as related to the content of this activity. All identified conflicts of interest are thoroughly vetted by University of Michigan Medical School for fair balance, scientific objectivity of studies mentioned in the materials or used as the basis for content, and appropriateness of patient care recommendations.

ACCREDITATION STATEMENT

UMMS

University of Michigan Medical School is accredited by the Accreditation Council for Continuing Medical Education (ACCME) to provide continuing medical education for physicians. University of Michigan Medical School designates this educational activity for a maximum of 1.0 *AMA PRA Category 1 Credit*[™]. Physicians should only claim credits commensurate with the extent of their participation in the activity.

GNA/ANCC

This educational activity for up to 1.0 contact hour is provided by the Institute for Medical Education & Research, Inc. (IMER). IMER is an approved provider of continuing nursing education by the Georgia Nurses Association, an accredited approver by the American Nurses Credentialing Center's Commission on Accreditation.

A statement of credit will be issued only upon receipt of a completed activity evaluation form.

There is no fee for this educational activity.

Jointly sponsored by:



www.IMERonline.com

Thursday, August 26, 2010

Session 1:00 pm

The Cancer Institute of New Jersey

CINJ Auditorium

195 Little Albany Road • New Brunswick, New Jersey

To register for this activity please contact:
Office of Nursing & Patient Education
at 732-235-8784 or nursinged-cinj@umdnj.edu

This activity is supported by an independent educational grant from Novartis Pharmaceuticals Corporation.